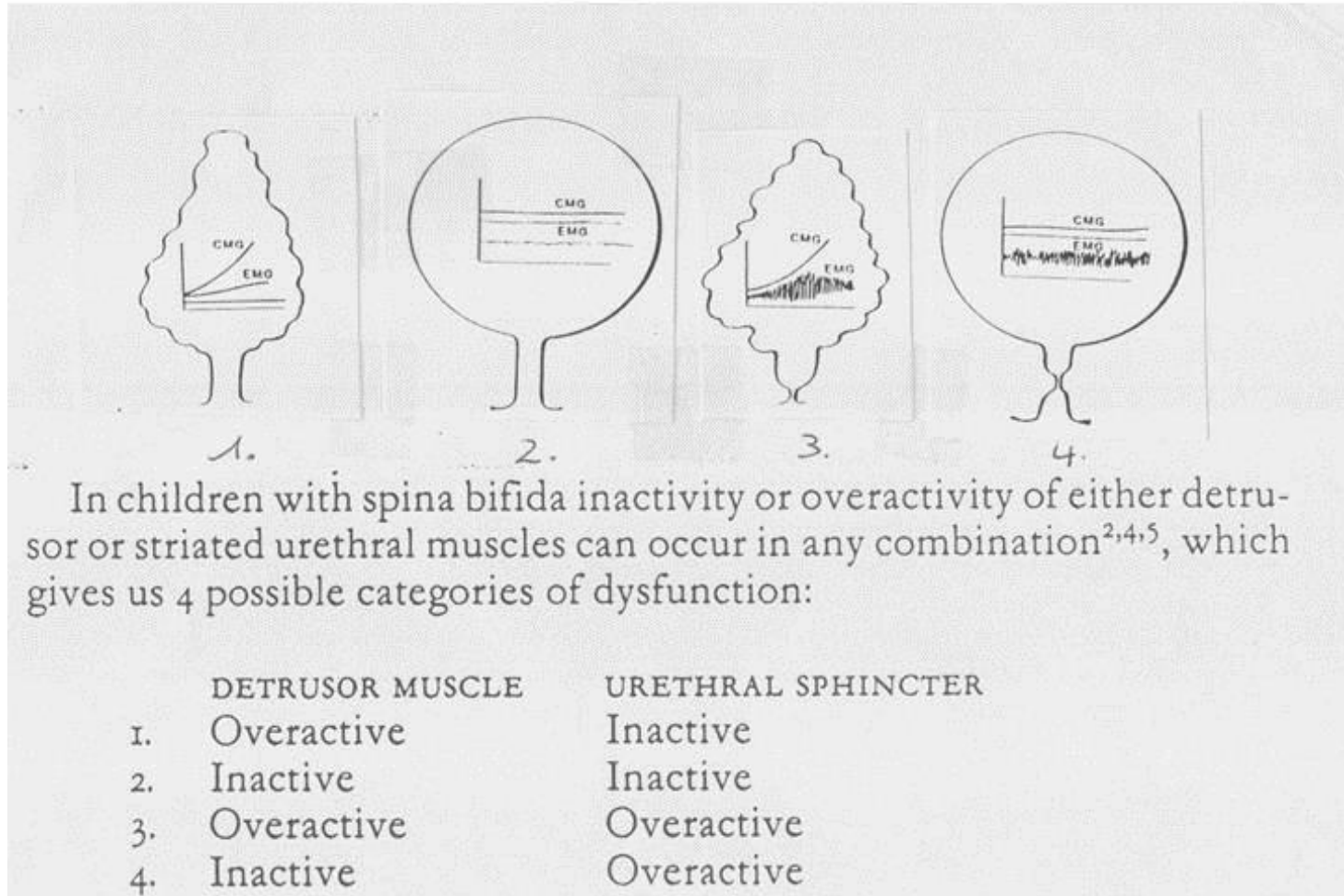
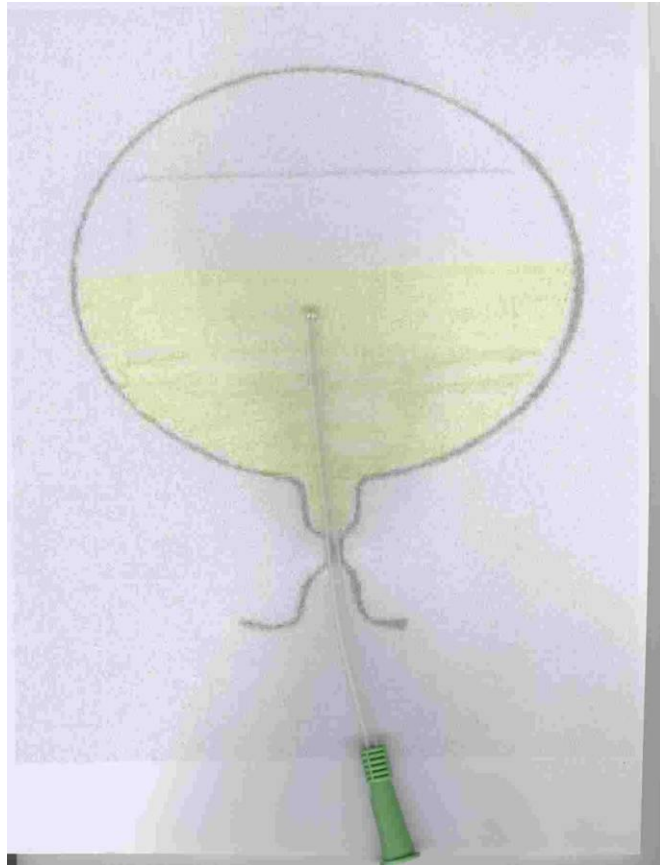


4 different neurogenic bladder types



Flacid bladder and hyperactive sfincter



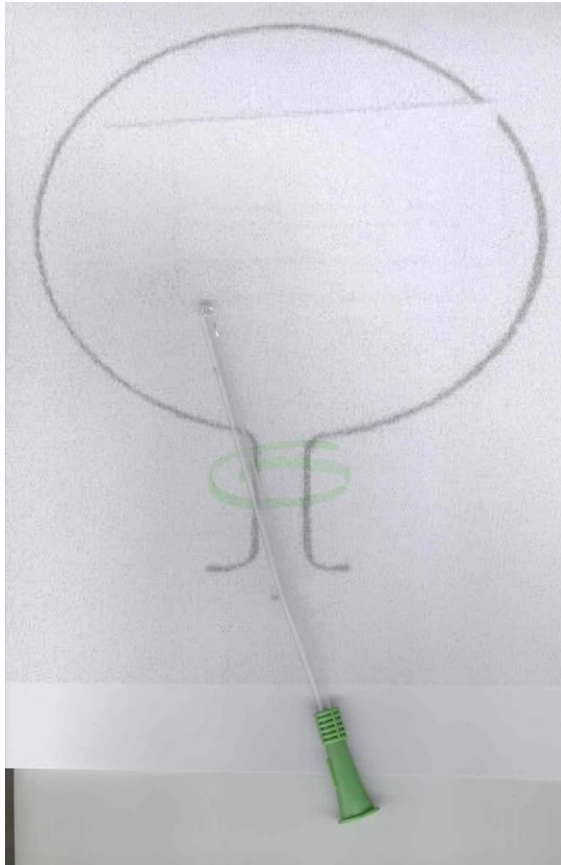
Unsafe :

- urine retention : high pressure
- Infections
- Good volumes

R/ : CIC 5x/day

dry without infections

Flacid detrusor and flacid sfincter



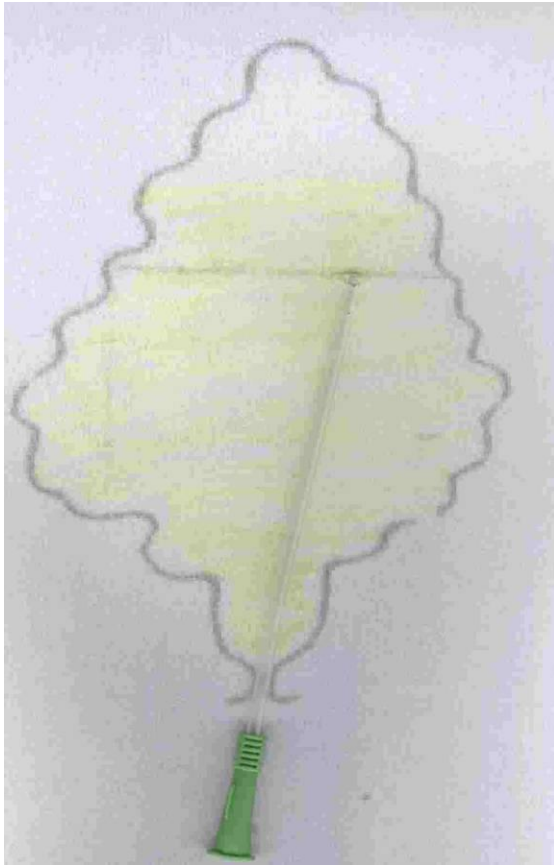
Safe

- Dribbling of urine

R/ :

- CIC to prevent infections
 - to become continent
- Sling operation +
CIC+ (Oxybutynine)

Detrusor overactivity and hyperactive sfincter

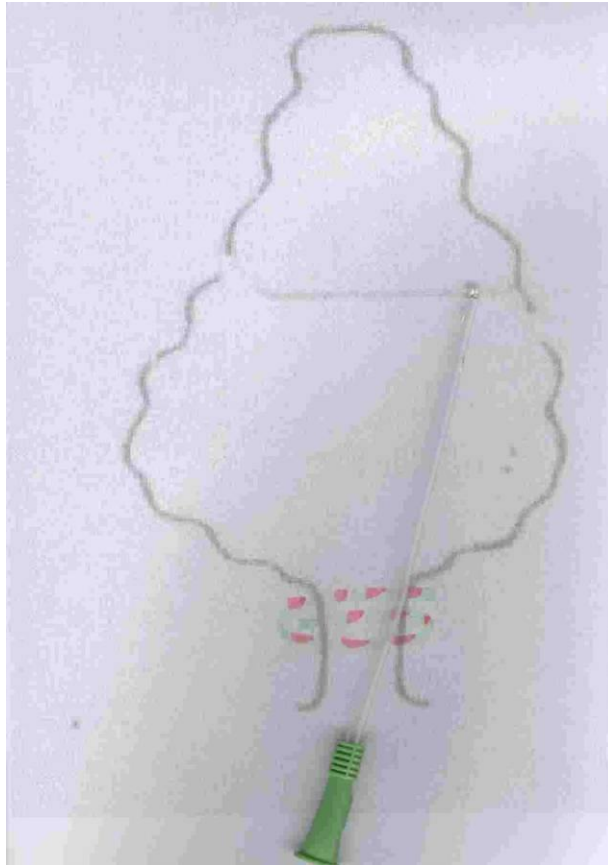


Very Unsafe :

- urine retention early in life
- high pressure
- Infections
- Bladder and kidney deterioration
- Good volumes

**R/ : CIC 5x/day +
Oxybutynine**

Hyperactive detrusor and flacid sfincter

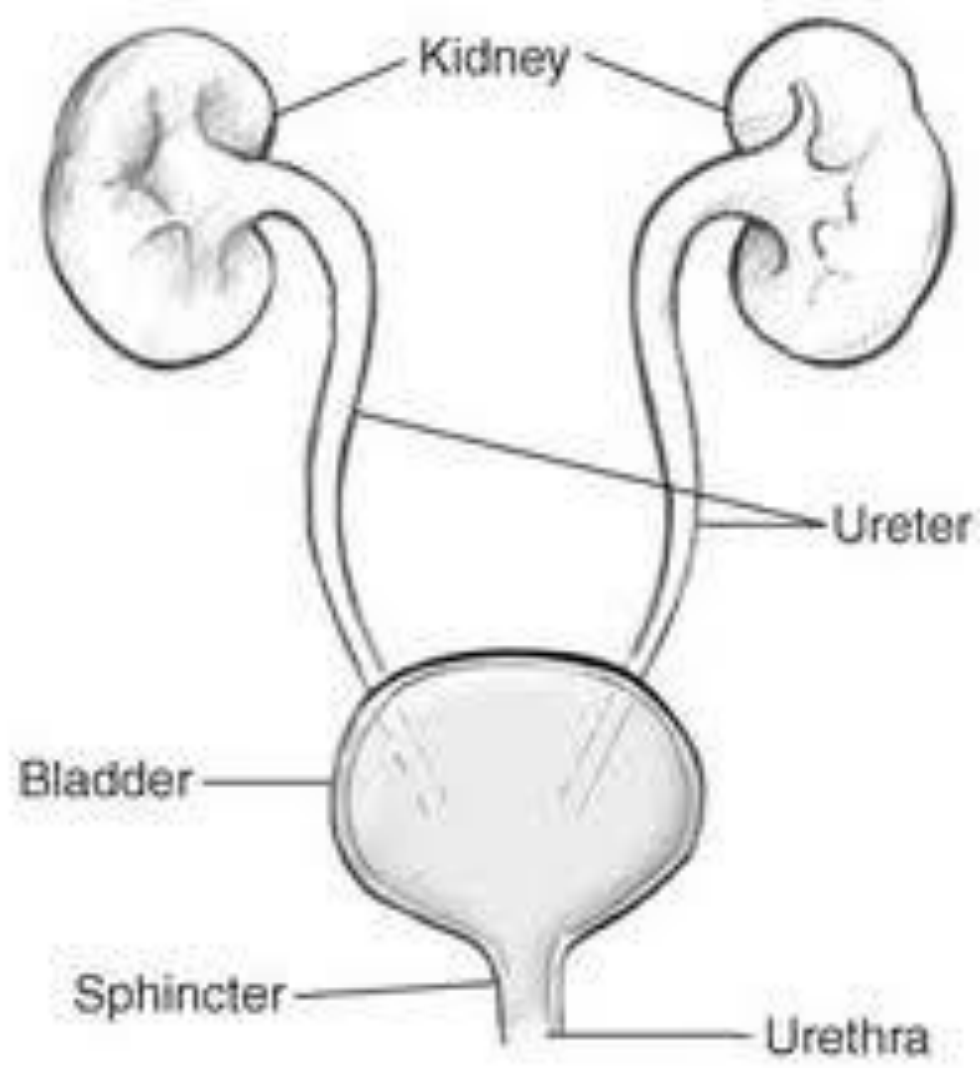


Unsafe :

- high pressure because of bladdermuscle hypertrophy
- Infections
- Bladder and kidney deterioration later in life

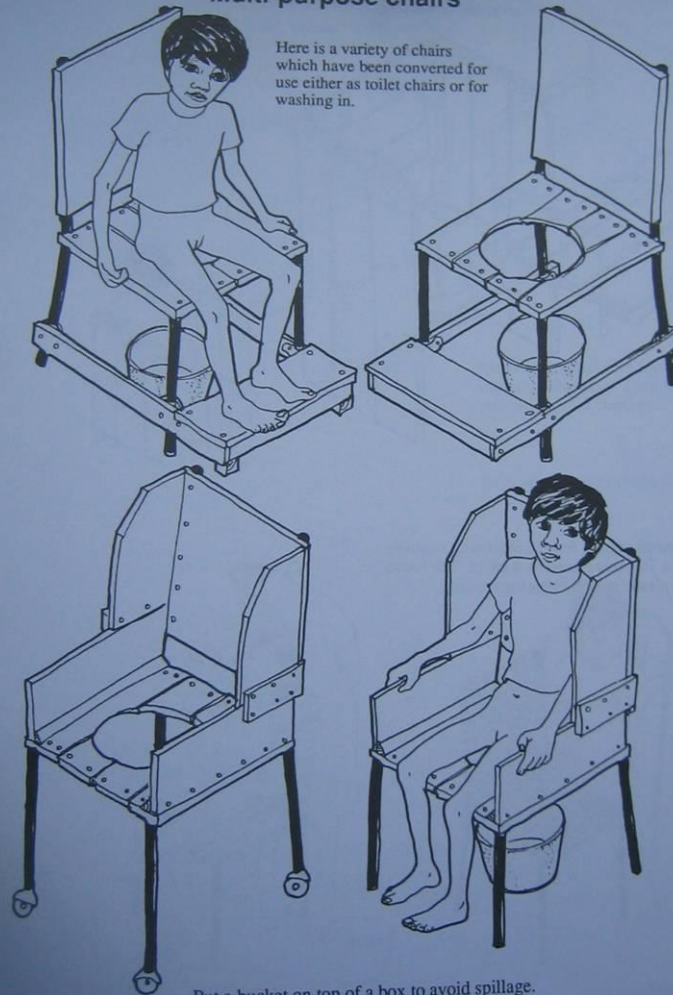
R/ :

CIC 5x/day+
Oxybutynine +
sling operation



Multi-purpose chairs

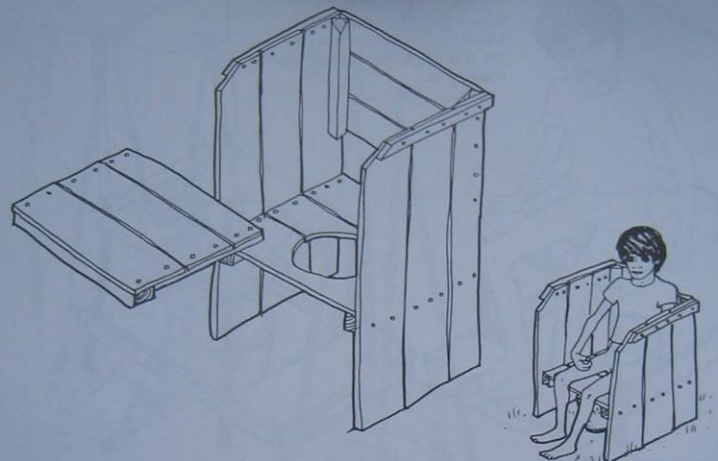
Here is a variety of chairs which have been converted for use either as toilet chairs or for washing in.



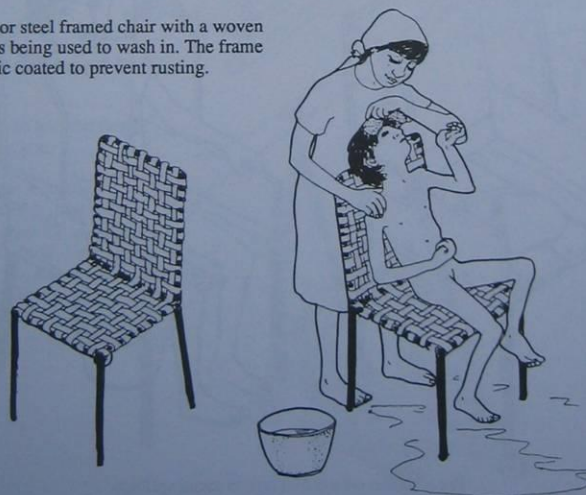
Put a bucket on top of a box to avoid spillage.

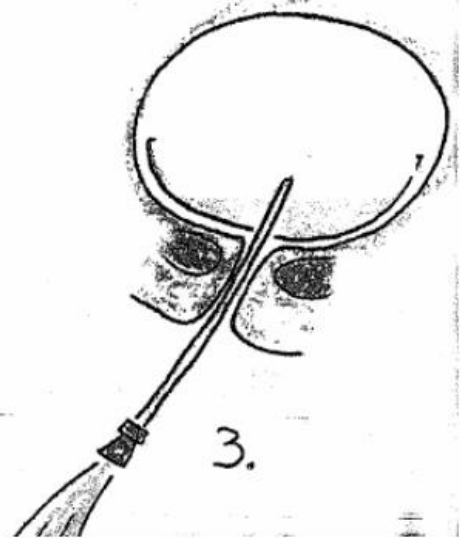
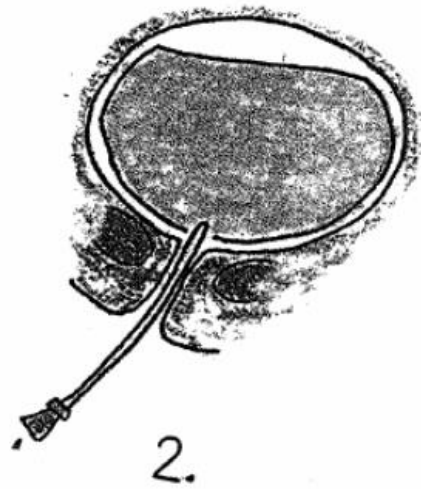
SITTING AIDS

Often chairs are needed for more than one purpose, such as toileting or washing.

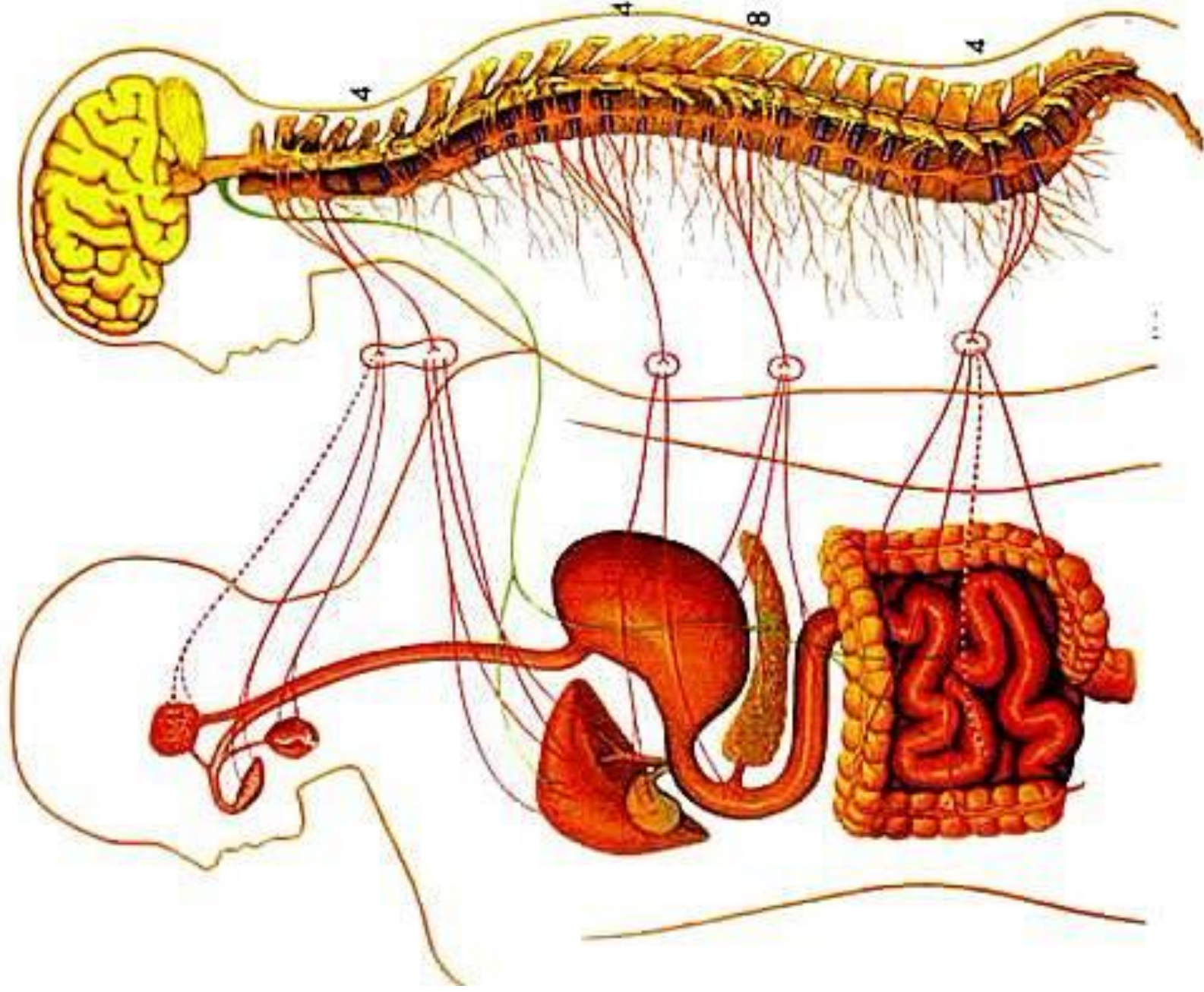


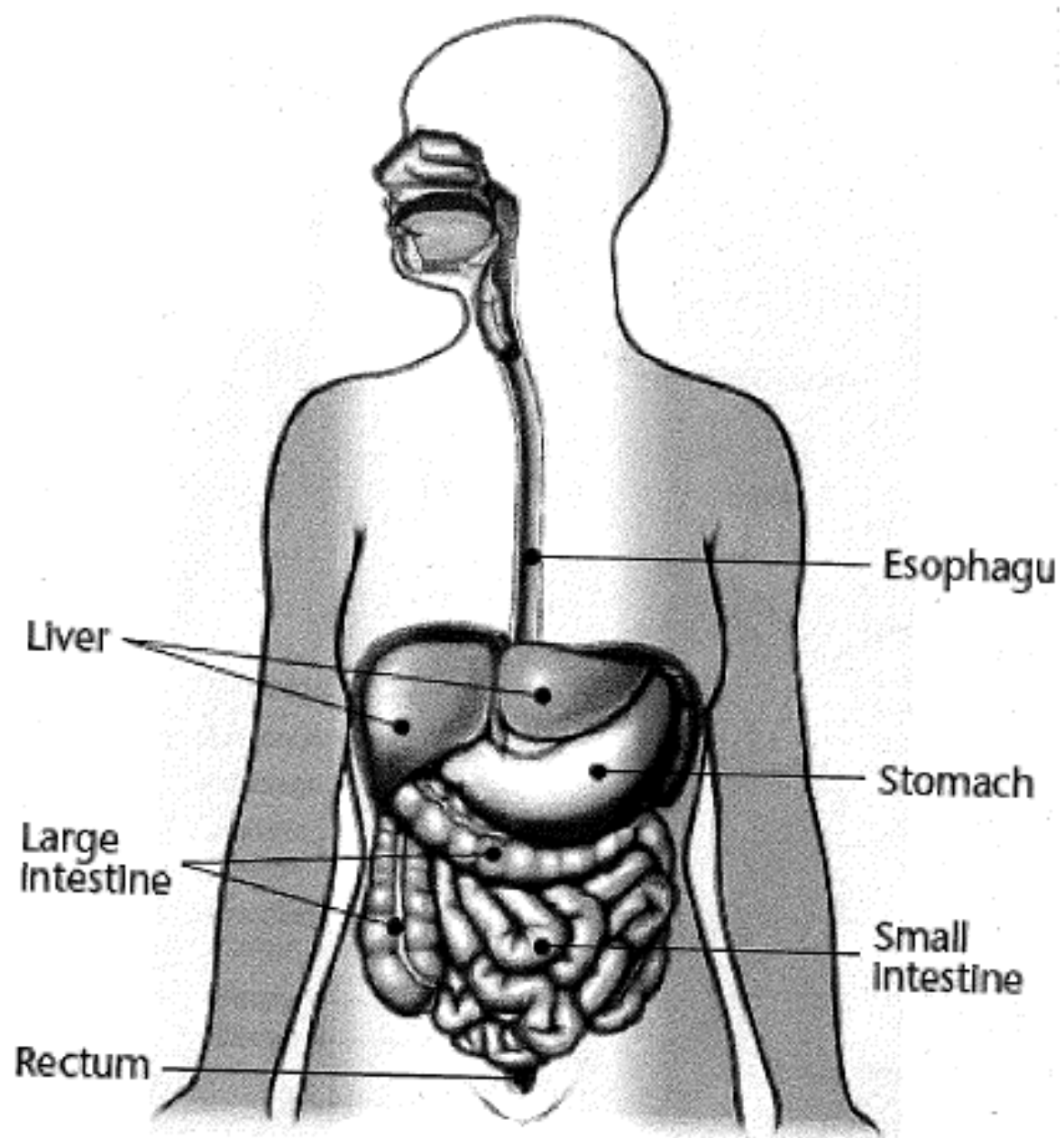
This is a metal or steel framed chair with a woven plastic seat. It is being used to wash in. The frame should be plastic coated to prevent rusting.





DIGESTIVE SYSTEM





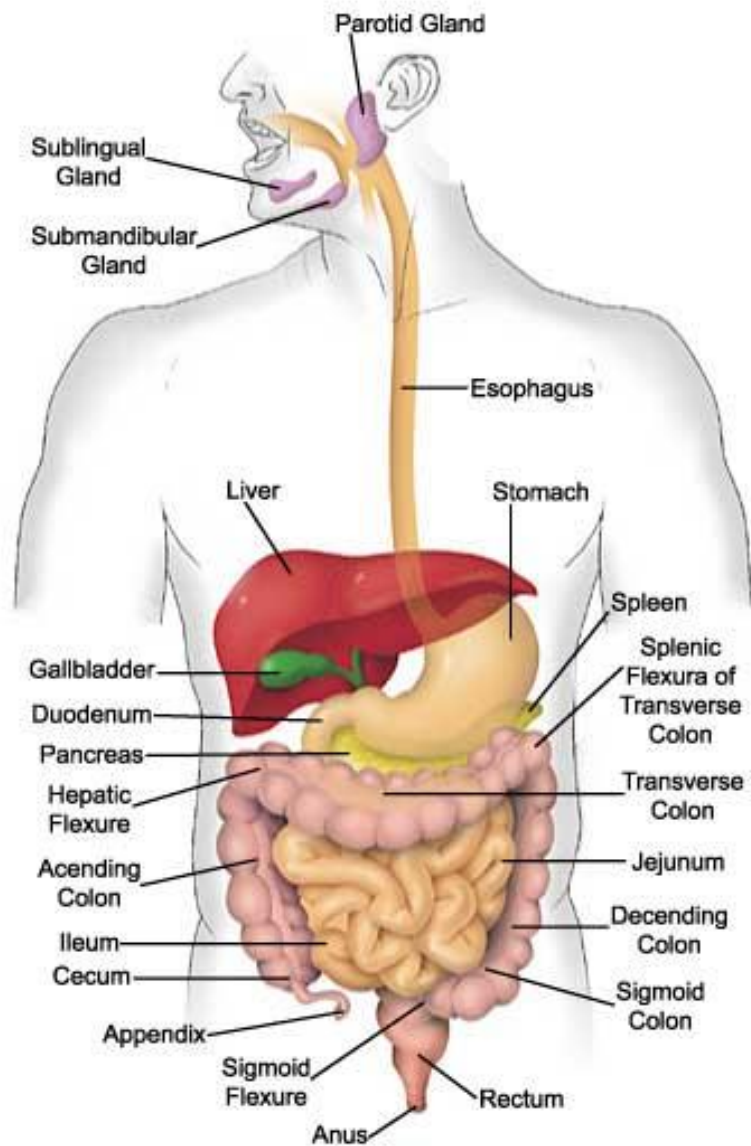




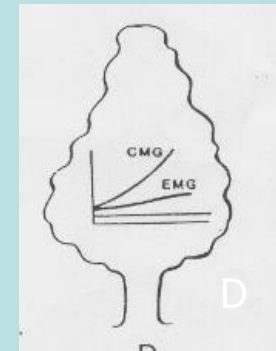
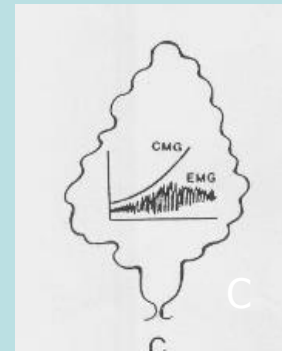
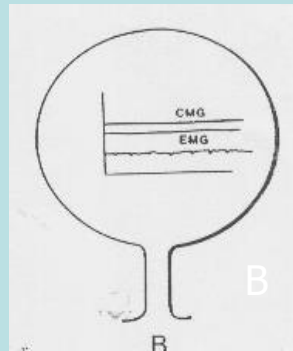
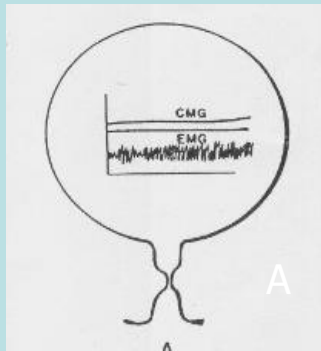








neurogenic bladder management



- A = safe with CIC
- B = safe and dry with CIC + sling (+ Oxybutynin)
- C = safe and dry with Oxybutynin + CIC
- D = safe and dry with Oxybutynin + CIC + sling